

# On stability of lattice Boltzmann schemes with relative velocities

**Tony Fevrier**, Paris-Sud Orsay University, France

**Benjamin Graille**, Paris-Sud Orsay University, France

**François Dubois**, Cnam Paris (LMSSC), Paris-Sud Orsay University, France

**Keywords:** Boltzmann, stability, moments, velocity field.

We present here a new class of Lattice Boltzmann schemes induced by the work of M. Geier [2] which allow to simulate some fluid flows problems (Navier-Stokes). It aims to improve the issue of stability.

These schemes introduce in the matrix of moments  $M$  a dependence on a velocity field  $\tilde{u}$ . The moments are thus defined by  $m(\tilde{u}) = M(\tilde{u})f$  where  $f$  is the vector of particle distributions. This framework embeds the usual d’Humières schemes [1] and the cascaded scheme [2].

The third order consistency of this scheme has already been studied and the results are presented in [3]. Particularly, it is proven that the equivalent equations are independent of the velocity field up to the second order. This field only appears on the third order of the momentum equation.

In this contribution, we focus on a two dimensional case : the D2Q9 scheme with relative velocities. The purpose is to study its properties of stability according to  $\tilde{u}$ . We point out that the choice of the polynomials defining the moments is essential to stabilize the scheme. To achieve this, a linear Von Neumann analysis is presented. Some non linear test cases such as the Kelvin-Helmholtz instability and the Taylor Green vortex confirm the linear results.

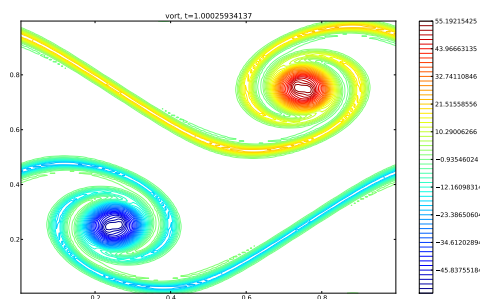


Fig. 1: *Kelvin-Helmholtz instability*

## References

- [1] D. D’HUMIÈRES, *Generalized Lattice-Boltzmann Equations*, AIAA Rarefied Gas Dynamics: Theory and Applications, Progress in Astronautics and Aeronautics, **159**, pp. 450–458, 1992.
- [2] A. GREINER, M. GEIER, J.C. KORVINK, *Cascaded digital lattice Boltzmann automata for high Reynolds number flow*, Phys. Rev. E, **73**, 066705, 2006.
- [3] F. DUBOIS, T. FEVRIER, B. GRAILLE, *Lattice Boltzmann schemes with relative velocities*, arXiv:1312.3297.

**Tony Fevrier**, Université Paris-Sud, Orsay, France

tony.fevrier@math.u-psud.fr

**Benjamin Graille**, Université Paris-Sud, Orsay, France

benjamin.graille@math.u-psud.fr

**François Dubois**, Cnam Paris (LMSSC), Université Paris-Sud, Orsay, France

francois.dubois@cnam.fr